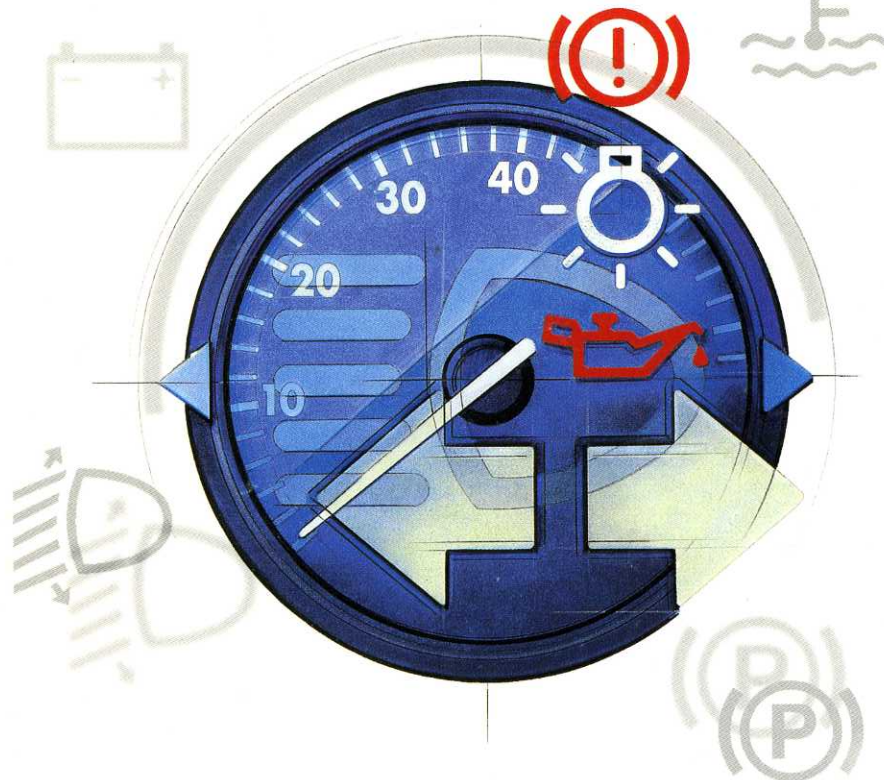




Transporter

- Drop-side
- Double cab
- Van
- Chassis
- Kombi

Technical Data



CONTENTS

ENGINE DATA AND CONSUMPTION

General notes, engine data	2
Performance	3
Fuel consumption	4

WEIGHTS AND DIMENSIONS

Weights (normal payload)	5
Weights (increased payload)	10
Weights (reduced payload)	15
Trailer weights	16
Retrofitting a tow bar	17
Dimensions	18

TYRES AND CAPACITIES

Wheels/Tyres/Pressures	20
Capacities, engine oil specifications	21

VEHICLE IDENTIFICATION DATA

Vehicle identification data	22
-----------------------------------	----

General information

Where not otherwise indicated or listed separately, all the following technical data is for standard vehicles in Germany.

For special vehicles and vehicles for other countries these figures may be different.

Please note that the details in the official vehicle documents can be taken as the correct figures.

Which engine is fitted in your vehicle can be found in the vehicle data in the Service Schedule or in the official vehicle paperwork.

Engine data

Output ¹⁾ kW (bhp) at rpm	Max. torque Nm at rpm	Cylinder	Capacity cm ³	Compression
Petrol engines				
Fuel: 62 kW engine unleaded regular petrol 91 RON ²⁾ fulfilling DIN EN 228 85 kW engine unleaded super petrol 95 RON ²⁾ fulfilling DIN EN 228				
62 (84) / 4300	159 / 2200	4	1968	8.5
85 (115) / 4500	200 / 2200	5	2461	10.0
Diesel engines				
Fuel: CN ³⁾ not lower than 51 fulfilling DIN EN 590 or diester fulfilling DIN E 51606				
50 (68) / 3700	140 / 2000–3000	4	1896	22.5
55 (75) / 3700	160 / 1900–2900	5	2370	22.5
65 (88) / 3700	195 / 2000–2600	5	2461	19.5
75 (102) / 3500	250 / 1900–2300	5	2461	19.5

¹⁾ According to EC or DIN regulations. Due to different methods of measuring, slight deviations are possible.

²⁾ Research Octane Number, indicates anti-knock properties of the fuel

³⁾ Cetane Number, indicates ignitability of the diesel fuel.

The use of **unleaded** regular petrol, with a minimum of 91 RON²⁾ leads to a slight loss of performance on the 85 kW engine.

Performance

The performance figures were measured without the vehicle being fitted with any equipment such as air conditioner, mud flaps, very wide tyres etc. which affect the performance.

Maximum speed in km/h					
		Van, Kombi	Drop-side	High-roof van, High-roof kombi	Double cab
Petrol engines					
62 kW	MG	144	128	137	132
85 kW	MG	164	148	157	152
	SY	162	146	155	150
	AG	160	144	153	148
Diesel engines					
50 kW	MG	132	119	126	121
55 kW	MG	136	123	130	125
	AG	132	119	126	121
65 kW	MG	150	134	143	138
75 kW	MG	157	140	150	145
	SY	155	138	148	143
	AG	153	136	146	141

MG = Manual gearbox

AG = Automatic gearbox

SY = Manual gearbox with four-wheel drive

Fuel consumption

These consumption figures were determined with a half payload at a constant speed of 90 km/h.

Depending on driving style, road and traffic conditions, environmental influences and vehicle condition, the figures obtained in actual practice may differ from those given.

All figures were measured with standard tyres. On vehicles with other tyres the figures will vary accordingly.

ltr/100 km		Van, Kombi	High-roof van, High-roof kombi	Drop-side	Double cab
Petrol engines					
62 kW	MG	8.7	9.4	10.9	10.6
85 kW	MG	8.9	9.7	11.1	10.9
	SY	9.3	10.1	11.9	11.6
	AG	9.7	10.4	12.5	12.2
Diesel engines					
50 kW	MG	6.9	7.5	8.9	8.7
55 kW	MG	7.2	8.1	9.2	9.0
	AG	8.6	9.6	10.9	10.6
65 kW	MG	6.9	7.1	7.9	7.8
75 kW	MG	6.5	7.1	7.8	7.6
	SY	7.0	7.2	7.8	7.7
	AG	7.1	7.3	7.9	7.8

MG = Manual gearbox

AG = Automatic gearbox

SY = Manual gearbox with four-wheel drive

Weights (normal payload)

Kombi					
Wheelbase 2920 mm					
in kg	Permissible GVW	Permissible front axle load	Permissible rear axle load	Unladen weight ¹⁾ with driver	Payload ¹⁾
50 and 62 kW	2600	1400	1330	1607	993
... LS	2520	1330	1230	1607	913
55 and 85 kW	2700	1480	1330	1682	1018
... LS	2620	1400	1230	1682	938
65 and 75 kW	2700	1510	1330	1712	988
... LS	2620	1430	1230	1712	908
Wheelbase 3320 mm					
50 and 62 kW	2600	1480	1330	1649	951
55 and 85 kW	2700	1570	1330	1724	976
65 and 75 kW	2700	1600	1330	1754	946
Highroof Kombi					
Wheelbase 3320 mm					
50 and 62 kW	2600	1480	1330	1699	901
55 and 85 kW	2700	1570	1330	1774	926
65 and 75 kW	2700	1600	1330	1804	896

¹⁾ The unladen weight increases on vehicles
... with four-wheel drive by 100 kg,
... with automatic gearbox by 30 kg
and reduces the payload accordingly.

LS = lowered suspension

The permissible roof load is 100 kg.

Notes - see page 15

Van					
Wheelbase 2920 mm					
in kg	Permissible GVW	Permissible front axle load	Permissible rear axle load	Unladen weight ¹⁾ with driver	Payload ¹⁾
50 and 62 kW	2575	1330	1410	1580	995
... LS	2525	1330	1230	1580	945
55 and 85 kW	2650	1400	1410	1655	995
... LS	2600	1400	1230	1655	945
65 and 75 kW	2680	1430	1410	1685	995
... LS	2630	1430	1230	1685	945
Wheelbase 3320 mm					
50 and 62 kW	2625	1400	1410	1630	995
55 and 85 kW	2700	1480	1410	1705	995
65 and 75 kW	2730	1510	1410	1735	995
Highroof van					
Wheelbase 3320 mm					
50 and 62 kW	2625	1400	1410	1680	945
55 and 85 kW	2700	1480	1410	1755	945
65 and 75 kW	2730	1510	1410	1785	945

Notes – see page 15

¹⁾ The unladen weight increases on vehicles
 ... with four-wheel drive by 100 kg,
 ... with automatic gearbox by 30 kg
 and reduces the payload accordingly.

LS = lowered suspension

The permissible roof load is 100 kg.

Drop-side					
Wheelbase 2920 mm					
in kg	Permissible GVW	Permissible front axle load	Permissible rear axle load	Unladen weight ¹⁾ with driver	Payload ¹⁾
50 and 62 kW	2575	1250	1410	1530	995
55 and 85 kW	2600	1330	1410	1605	995
65 and 75 kW	2630	1360	1410	1635	995
Wheelbase 3320 mm					
50 and 62 kW	2575	1330	1410	1580	995
55 and 85 kW	2650	1400	1410	1655	995
65 and 75 kW	2680	1430	1410	1685	995
Low loader					
Wheelbase 3320 mm					
50 and 62 kW	2575	1330	1410	1580	995
55 and 85 kW	2650	1400	1410	1655	995
65 and 75 kW	2680	1430	1410	1685	995

Notes – see page 15

¹⁾ The unladen weight increases on vehicles
 ... with four-wheel drive by 100 kg,
 ... with automatic gearbox by 30 kg
 and reduces the payload accordingly.

The permissible roof load is 50 kg.

Double cab					
Wheelbase 3320 mm					
in kg	Permissible GVW	Permissible front axle load	Permissible rear axle load	Unladen weight ¹⁾ with driver	Payload ¹⁾
50 and 62 kW	2575	1400	1490	1650	925
55 and 85 kW	2650	1480	1490	1725	925
65 and 75 kW	2680	1510	1490	1755	925
Chassis with double cab					
Wheelbase 3320 mm					
50 and 62 kW	2575	1400	1490	1520	1055
55 and 85 kW	2650	1480	1490	1595	1055
65 and 75 kW	2680	1510	1490	1625	1055

¹⁾ The unladen weight increases on vehicles
 ... with four-wheel drive by 100 kg,
 ... with automatic gearbox by 30 kg
 and reduces the payload accordingly.

The permissible roof load is 75 kg.

Notes – see page 15

Chassis with cab					
Wheelbase 2920 mm					
in kg	Permissible GVW	Permissible front axle load	Permissible rear axle load	Unladen weight ¹⁾ with driver	Payload ¹⁾
50 and 62 kW	2525	1250	1410	1375	1150
55 and 85 kW	2600	1330	1410	1450	1150
65 and 75 kW	2630	1360	1410	1480	1150
Wheelbase 3320 mm					
50 and 62 kW	2575	1330	1410	1400	1175
55 and 85 kW	2650	1400	1410	1475	1175
65 and 75 kW	2680	1430	1410	1505	1175

¹⁾ The unladen weight increases on vehicles
 ... with four-wheel drive by 100 kg,
 ... with automatic gearbox by 30 kg
 and reduces the payload accordingly.

The permissible roof load is 50 kg.

Notes – see page 15

**Weights
(increased payload)**

Kombi					
Wheelbase 2920 mm					
in kg	Permissible GVW	Permissible front axle load	Permissible rear axle load	Unladen weight ¹⁾ with driver	Payload ¹⁾
50 and 62 kW	2700	1400	1490	1607	1093
55 and 85 kW	2800	1480	1490	1682	1118
65 and 75 kW	2800	1510	1490	1712	1088
Wheelbase 3320 mm					
50 and 62 kW	2700	1480	1490	1649	1051
55 and 85 kW	2800	1570	1490	1724	1076
65 and 75 kW	2800	1600	1490	1754	1046
Highroof Kombi					
Wheelbase 3320 mm					
50 and 62 kW	2700	1480	1490	1699	1001
55 and 85 kW	2800	1570	1490	1774	1026
65 and 75 kW	2800	1600	1490	1804	996

¹⁾ The unladen weight increases on vehicles
 ... with four-wheel drive by 100 kg,
 ... with automatic gearbox by 30 kg
 and reduces the payload accordingly.
 The permissible roof load is 100 kg.

Notes - see page 15

Van					
Wheelbase 2920 mm					
in kg	Permissible GVW	Permissible front axle load	Permissible rear axle load	Unladen weight ¹⁾ with driver	Payload ¹⁾
50 and 62 kW	2785	1400	1490	1580	1205
55 and 85 kW	2800	1480	1490	1630	1145
65 and 75 kW	2800	1510	1490	1685	1115
Wheelbase 3320 mm					
50 and 62 kW	2800	1480	1490	1630	1170
55 and 85 kW	2800	1480	1490	1705	1095
65 and 75 kW	2800	1510	1490	1735	1065
Highroof van					
Wheelbase 3320 mm					
50 and 62 kW	2800	1480	1490	1680	1120
55 and 85 kW	2800	1480	1490	1755	1045
65 and 75 kW	2800	1510	1490	1785	1015

¹⁾ The unladen weight increases on vehicles
 ... with four-wheel drive by 100 kg,
 ... with automatic gearbox by 30 kg
 and reduces the payload accordingly.
 The permissible roof load is 100 kg.

Notes - see page 15

Drop-side**Wheelbase 2920 mm**

in kg	Permissible GVW	Permissible front axle load	Permissible rear axle load	Unladen weight ¹⁾ with driver	Payload ¹⁾
50 and 62 kW	2785	1330	1490	1530	1255
55 and 85 kW	2800	1400	1490	1605	1195
65 and 75 kW	2800	1430	1490	1635	1165

Wheelbase 3320 mm

50 and 62 kW	2785	1400	1490	1580	1205
55 and 85 kW	2800	1480	1490	1655	1145
65 and 75 kW	2800	1510	1490	1685	1115

Low loader**Wheelbase 3320 mm**

50 and 62 kW	2785	1400	1490	1580	1205
55 and 85 kW	2800	1480	1490	1655	1145
65 and 75 kW	2800	1510	1490	1685	1115

¹⁾ The unladen weight increases on vehicles
... with four-wheel drive by 100 kg,
... with automatic gearbox by 30 kg
and reduces the payload accordingly.

The permissible roof load is 50 kg.

Notes – see page 15

Double cab**Wheelbase 3320 mm**

in kg	Permissible GVW	Permissible front axle load	Permissible rear axle load	Unladen weight ¹⁾ with driver	Payload ¹⁾
50 and 62 kW	2785	1400	1490	1650	1135
55 and 85 kW	2800	1480	1490	1725	1075
65 and 75 kW	2800	1510	1490	1755	1045

Chassis with double cab**Wheelbase 3320 mm**

50 and 62 kW	2785	1400	1490	1520	1265
55 and 85 kW	2800	1480	1490	1595	1205
65 and 75 kW	2800	1510	1490	1625	1175

¹⁾ The unladen weight increases on vehicles
... with four-wheel drive by 100 kg,
... with automatic gearbox by 30 kg
and reduces the payload accordingly.

The permissible roof load is 75 kg.

Notes – see page 15

