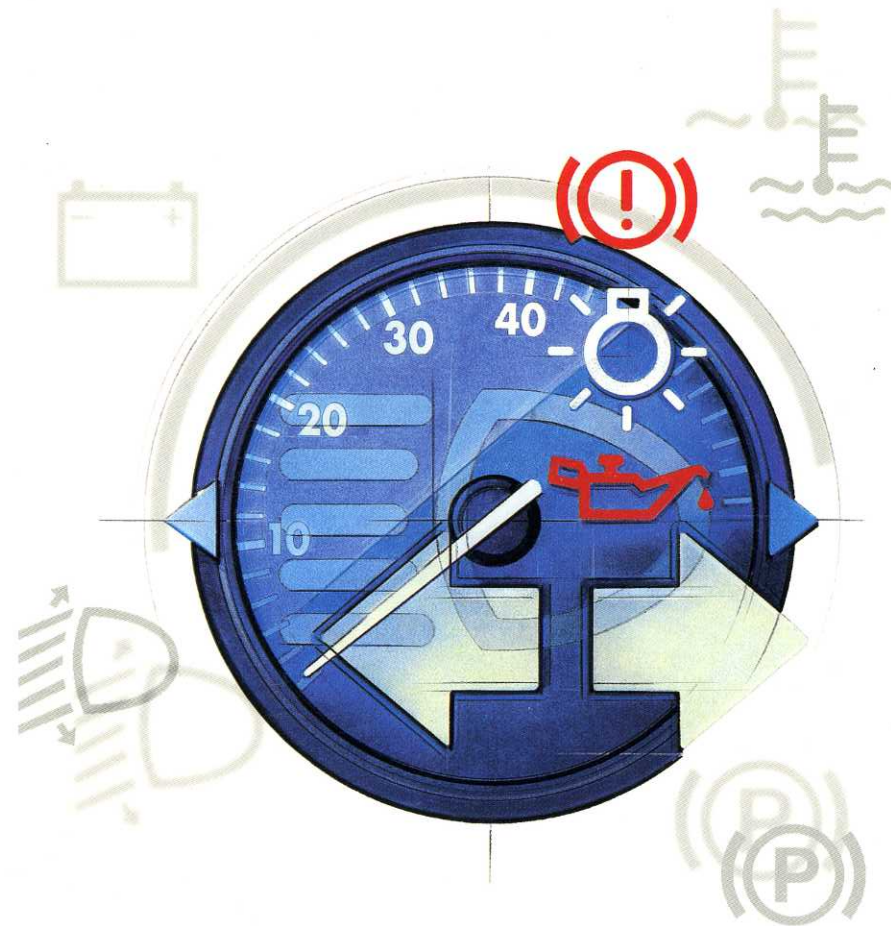




**Multivan
Caravelle**

Technical Data



CONTENTS

GENERAL POINTS

General notes on the technical data	2
Retrofitting a tow bar	5
Vehicle identification data	6

TECHNICAL DATA

62 kW (84 bhp) Petrol engine	8
85 kW (115 bhp) Petrol engine	11
150 kW (204 bhp) Petrol engine	14
50 kW (68 bhp) Diesel engine	17
55 kW (75 bhp) Diesel engine	20
65 kW (88 bhp) Diesel engine	23
75 kW (102 bhp) Diesel engine	26
111 kW (150 bhp) Diesel engine	29

General notes on the technical data

Where not otherwise indicated or listed separately, all the following technical data is for standard vehicles in Germany.

For special vehicles and vehicles for other countries these figures may be different.

Please note that the details in the official vehicle documents can be taken as the correct figures.

Engine data

Which engine is fitted in your vehicle can be found in the vehicle data in the Service Schedule or in the official vehicle paperwork.

Performance

The performance figures were measured without the vehicle being fitted with any equipment such as air conditioner, mud flaps, very wide tyres etc. which affect the performance.

Fuel consumption

The consumption and emission values have been compiled according to the measuring regulation 93 / 116 / EG and take the actual empty vehicle weight into account (weight class). Two measuring cycles are carried out on a rolling test bed to determine fuel consumption. For this purpose, the following test conditions were applied:

- The measurement of the **urban cycle (in the town)** begins with a cold engine start. Normal town driving is then simulated.

- In the **extra urban** cycle (outside of towns) the vehicle is constantly accelerated and braked in all gears to simulate normal use. The speed varies between 0 and 120 km/h.

- The calculation of the **combined figure** is weighted 37 % for the urban cycle and 63 % for the country cycle.

- In order to calculate the **CO₂ emissions**, exhaust fumes are collected during both cycles (which are carried out on a rolling road test bed to simulate normal use). The exhaust gases are then analysed and the CO₂ emissions value, amongst other values, is determined.

Note

- The consumption and emissions values are applicable for the empty vehicle weight range given. The empty weight and thus the weight class can change depending on the equipment fitted. The consumption figures and the CO₂ emissions value may increase slightly as a result. Your Volkswagen dealer will be able to inform you of the figures applicable to your vehicle.

- According to driving style, road and traffic conditions, environmental considerations and the condition of the vehicle, values could be determined in actual use which differ from the values determined according to the measuring regulation.

Tyre pressures

These pressures are for cold tyres. When tyres are warm the pressure is higher but do not reduce it.

Warning

The tyre pressures must be checked at least once a month. They are very important particularly at high speeds.

Weights

The figures are valid for the basic model with driver (75 kg). Special model versions and optional equipment, such as air conditioner, sliding roof, towing equipment and the service fitting of accessories will increase the unladen weight and reduce the payload accordingly.

Warning

● The permissible payloads and GVW must not be exceeded under any circumstances.

Tightening torques of the wheel bolts

The following point should be noted after having changed the wheel:

The tightening torque of the wheel bolts should be checked with a torque wrench as quickly as possible.

The torque for steel and alloy wheels 180 Nm.

Warning

If the tightening torque of the wheel bolts is too low, the bolts could loosen whilst the vehicle is in motion – risk of accident! The wheel bolts or the thread could also be damaged if the tightening torque is much too high.

Snow chains

Snow chains may only be fitted on the front wheels – this also applies to vehicles with four wheel drive.

The use of snow chains on the tyres 215/65 R 15 or larger tyres is, for technical reasons, not permissible. Smaller wheels might have to be fitted.

Snow chains may only be used on 205/60 R 16 tyres in conjunction with 6J x 16" rims on vehicles with a 16" running gear.

Trailer weights

● The figures for trailer weights apply for vehicles in Germany. They may differ for vehicles in other countries. It should be noted that any details given in the legal documentation for the vehicle have priority.

● According to Directive 92/21 EEC (Version 95/48/EG) the maximum permissible weight of the towing vehicle with trailer may be exceeded by a maximum of **100 kg**, the permissible rear axle load by a maximum of **70 kg**, as long as the speed of the vehicle does not exceed **100 km/h** in this special case.

For safety reasons, however, the speed should not exceed 80 km/h. This also applies to countries where higher speeds are allowed.

Drawbar weights

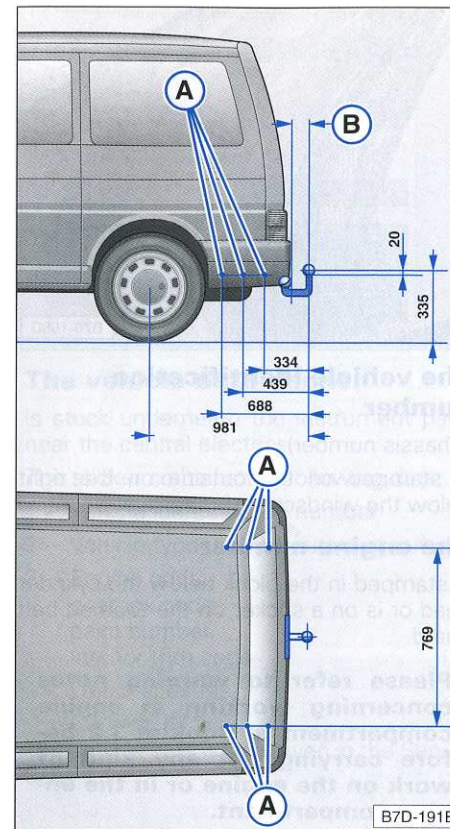
● The **maximum** permissible weight of the trailer drawbar on the ball of the towing hitch must not exceed **100 kg**.

The minimum required drawbar weight must be 4 % of actual trailer weight but need not be more than 25 kg. It is advisable to make use of the maximum permissible drawbar weight.

Warning

● **The permissible rear axle load and GVW must not be exceeded under any circumstances by the drawbar weight.**

Retrofitting a tow bar



A = Securing points on the vehicle

B = min. 65 mm

All measurements in mm.

The given distance from the centre of the ball coupling to the ground must be kept to under all circumstances. This also applies to a fully laden vehicle include the maximum drawbar weight.

Warning

Risk of accident!

If a tow bar is to be retrofitted, we recommend that this be carried out by a Volkswagen dealer.

● **For your own safety, please follow the instructions given in the assembly manual delivered by the manufacturer.**

Please note the following points, however, if you wish to install the tow bar yourself:

● Please comply with any legal regulations that apply in your home country (e.g. installation of a warning lamp).

● Vehicle parts, such as the bumper, will have to be removed and reinstalled. Furthermore, the securing screws will have to be tightened with a torque wrench and a 7 or 13 pole socket with have to be connected to the electrical system of the vehicle. Special skills and tools are required for this purpose.

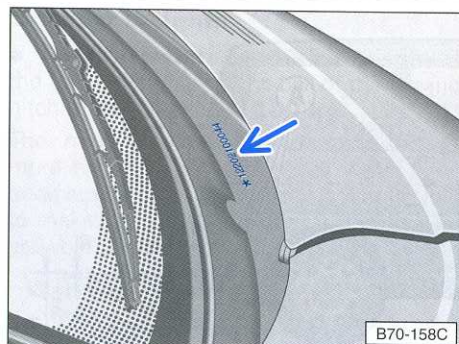
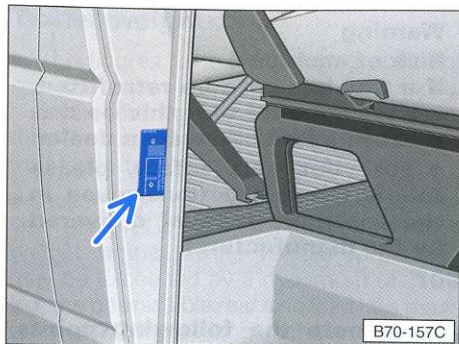
● The details given in the illustration show the measurements and securing points which must be adhered to if a tow bar is to be retrofitted.

Warning

● **There is the risk of an accident if the tow bar is incorrectly installed!**

● **Damage could occur in other parts of the vehicle if the socket is incorrectly connected to the vehicle's electrical system!**

Vehicle identification data



The type plate

is secured to the front passenger's door lock pillar.

Vehicles for certain export countries have no type plate.

The vehicle identification number

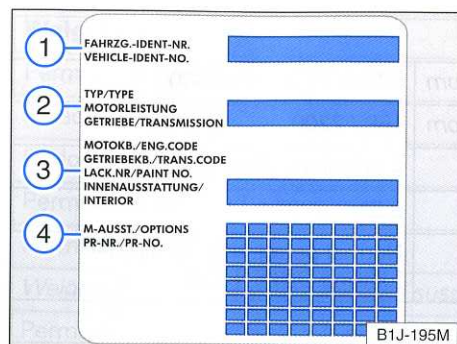
(Chassis number)

is stamped on the outside on the right below the windscreen – see illustration.

The engine number

is stamped in the block below the cylinder head or is on a sticker on the toothed belt guard.

Please refer to warning notes concerning working in engine compartment in Booklet 3.2 before carrying out any kind of work on the engine or in the engine compartment.



The vehicle data sticker

is stuck underneath the instrument panel near the central electrics.

The sticker contains the following data:

- 1 - Vehicle identification number
- 2 - Vehicle type, engine output, gearbox
- 3 - Engine code, gearbox code, paint number, interior trim code
- 4 - Optional extras, PR number

The vehicle data is also given in the Service Schedule.

62 kW (84 bhp) Petrol engine

Engine data		
Output ¹⁾	at rpm	62 kW (84 bhp) / 4300
Max. torque	in Nm at rpm	159 / 2200
Cylinders, capacity		4 cylinders, 1968 cm ³
Compression		8.5
Unleaded fuel		Normal petrol, min. RON 91 ²⁾ fulfilling DIN EN 228
Performance		
Max. speed	in km/h	MG=144
Acceleration 0–80 km/h	in sec.	MG=12.9
Acceleration 0–100 km/h	in sec.	MG=21.7
Fuel consumption		
● Unladen weight from 1616 to 1845 kg		
Urban	in ltr /100 km	MG=14.6
Extra urban	in ltr /100 km	MG=9.2
Combined	in ltr /100 km	MG=11.2
CO ₂ emission	in g/km	MG=269
● Unladen weight from 1846 to 2075 kg		
Urban	in ltr /100 km	MG=14.8
Extra urban	in ltr /100 km	MG=9.4
Combined	in ltr /100 km	MG=11.4
CO ₂ emission	in g/km	MG=274

MG = Manual gearbox

Please also refer to the notes on the technical data on page 2.

¹⁾ According to EC or DIN regulations.
Due to different methods of measuring, slight deviations are possible.

²⁾ **R**esearch **O**ctane **N**umber, indicates anti-knock properties of the fuel

Weights ¹⁾		
Permissible Gross Vehicle Weight	in kg	MG=2600
Unladen weight	in kg	MG=1840
Payload	in kg	MG=760
Permissible axle load – front, rear	in kg	all models: 1400, 1330
Permissible roof load	in kg	all models: 100
<i>Weights for vehicles with a lowered suspension:</i>		
Permissible Gross Vehicle Weight	in kg	MG=2520
Unladen weight	in kg	MG=1840
Payload	in kg	MG=680
Permissible axle load – front, rear	in kg	all models: 1400, 1230
Permissible roof load	in kg	all models: 100
Trailer weights		
with brakes,	Gradients up to 12 %	all models: 2000 kg
without brakes,	Gradients up to 12 %	all models: 700 kg
Perm. comb. weight ²⁾ ,	Gradients up to 12 %	all models: 4500 kg
Tyre pressure: up to half payload / up to full payload		
195/70 R15 97 S reinforced front, rear		2.6/2.4 bar, 3.0/3.4 bar
205/65 R15 C 100 T front, rear		2.8/2.5 bar, 3.5/3.2 bar
The tyre pressure values can be found on a sticker on the driver's door lock column. They also apply for the recommended winter tyres 205/65 R15 C 100 T M+S.		

MG = Manual gearbox

¹⁾ The unladen weight is increased on vehicles
... with four-wheel drive by 100 kg,
... with automatic gearbox by 30 kg,
... with pop-up roof by 60 kg
and reduces the payload accordingly.

²⁾ The combined weight is made up of the gross vehicle weight of the towing vehicle and the gross weight of the trailer. When the permissible trailer payload is fully utilized, in some cases the weight of the towing vehicle must be correspondingly reduced.

85 kW (115 bhp) Petrol engine

Dimensions ¹⁾	
Length ²⁾ , max. width above the mirrors	4789 mm, 2175 mm
Wheelbase	2920 mm
Height when unladen	1920 mm
... with pop-up roof closed	1995 mm
... with pop-up roof open	2810 mm
Overhang at front, rear	986 mm, 901 mm
Ground clearance at permissible GVW	180 mm
Fording depth	300 mm
Track front, rear	1589 mm, 1554 mm
Turning circle ³⁾	approx. 11.7 m
Capacities	
Fuel tank	<i>in litres</i> approx. 80, of which reserve approx. 10
Windscreen washer fluid container ⁴⁾	<i>in litres</i> approx. 4.0
– with headlight washer system	<i>in litres</i> approx. 8.0
Engine oil ⁵⁾ with filter change	<i>in litres</i> 4.8
The oil level must be checked when filling up. Do not overfill!	
Multi-grade high lubricity oils	<i>Specification</i> VW 500 00 or VW 502 00
High lubricity oils	<i>Specification</i> VW 501 01

1) On vehicles with lowered suspension, the figures given for height and ground clearance are reduced by 20 mm.

2) On vehicles with a wheelbase of 3320 mm, the value increases by 400 mm.
On vehicles with a spare tyre bracket on tailgate, the value increases by about 230 mm.

3) On vehicles with a wheelbase of 3320 mm, turning circle is approx. 12.9 metres.

4) Please refer to Booklet 3.2 "Windscreen washer system" for information on which washing agent should be used.

5) Please refer to Booklet 3.2 "Engine Oil" for further information.

Engine data			
Output ¹⁾	<i>at rpm</i>	85 kW (115 bhp) / 4500	
Max. torque	<i>in Nm at rpm</i>	200 / 2200	
Cylinders, capacity		5 cylinders, 2461 cm ³	
Compression		10.0	
Unleaded fuel		Super petrol, min. RON 95 ²⁾ fulfilling DIN 228	
Performance			
Max. speed	<i>in km/h</i>	MG=164	AG=160 SY=162
Acceleration 0–80 km/h	<i>in sec.</i>	MG=12.1,	AG=12.7 SY=12.5
Acceleration 0–100 km/h	<i>in sec.</i>	MG=17.7	AG=19.1 SY=18.8
Fuel consumption			
● Unladen weight from 1846 to 2075 kg			
Urban	<i>in ltr /100 km</i>	MG=17.0	AG=17.6 SY=17.0
Extra urban	<i>in ltr /100 km</i>	MG=9.5	AG=10.0 SY=9.8
Combined	<i>in ltr /100 km</i>	MG=12.2	AG=12.7 SY=12.4
CO ₂ emission	<i>in g/km</i>	MG=293	AG=305 SY=298
● Unladen weight over 2076 kg			
Urban	<i>in ltr /100 km</i>	MG=17.2	AG=17.8 SY=17.2
Extra urban	<i>in ltr /100 km</i>	MG=9.7	AG=10.5 SY=10.0
Combined	<i>in ltr /100 km</i>	MG=12.4	AG=12.9 SY=12.6
CO ₂ emission	<i>in g/km</i>	MG=298	AG=310 SY=302

MG = Manual gearbox
AG = Automatic gearbox
SY = Manual gearbox with four-wheel drive

1) According to EC or DIN regulations.
Due to different methods of measuring, slight deviations are possible.

2) **Research Octane Number**, indicates anti-knock properties of the fuel

The use of **unleaded** regular petrol, with a minimum of 91 RON²⁾ leads to a slight loss of performance.

Please also refer to the notes on the technical data on page 2.

